

The logo features the text 'DERBY CITY' in a large, bold, white sans-serif font, with 'CATHOLIC YOUTH WORKER' in a smaller, bold, white sans-serif font below it. The text is set against a background of overlapping red and maroon geometric shapes.

DERBY CITY
CATHOLIC YOUTH WORKER

Job Applicants
Information Pack 2018

Welcome

to the Derby City Catholic Youth Worker Project

The project began in 2003 when the Derby City parishes decided to ring fence and redirect money for the purpose of Catholic Youth Work, that had previously been needed to fund building projects in schools. The role has developed over the years from primarily leadership of Confirmation Sacramental Programmes, to the empowerment of young leaders, to encouraging participation in events to meet the needs of young people within the city's Catholic community. Our key hope today is for the Derby City Catholic Youth Worker to establish strong relationships to gather young Catholics together in the city of Derby that encourages them in their faith and service of others.

Job Description

Job Title

Derby City Catholic Youth Worker

Responsible to

The Management Group

Key Tasks

To work with young people in the Derby City Parishes; to inspire and encourage them and to help parishes develop and maintain opportunities for young people to grow to full maturity as full members of the Catholic Church.

General Areas of Responsibility

1. To make contact with young people, priests and youth workers in the designated area.
2. To identify the needs of young people in the parishes, review present provision in the city parishes and, in the form of a three-year plan, suggest ways to meet those needs and support and develop present provision.
3. To support existing structures and to offer help and guidance to youth groups and leaders and to help parishes develop provision for young people where non exists.
4. To empower young leaders.
5. To encourage participation in local, national and international opportunities for the gathering of young Catholics in the celebration of their faith.
6. To foster cooperation between the parishes in the area of youth work.
7. To encourage liaison between the parishes and St Benedict School so as to build on the good work being done in each situation.
8. To reach out to young people and to actively engage with them, to ensure they feel included in the Catholic community.
9. In consultation with the Management Group and Line Manager, engage with appropriate review and supervision, professional, personal and spiritual development opportunities.
10. Maintain contact with, and where appropriate, work with local, Diocesan and national structures in Catholic Youth Work and with local statutory authorities, with a view to forming partnerships.

11. To study and adopt the Mission Statement of the NDCYS, its aims and objectives and to apply that mission to the designated area. To become familiar with and to implement other relevant Diocesan policies.
12. To administer and account for the yearly operational budget, supplementing this, where necessary, with grant funding for specific projects.

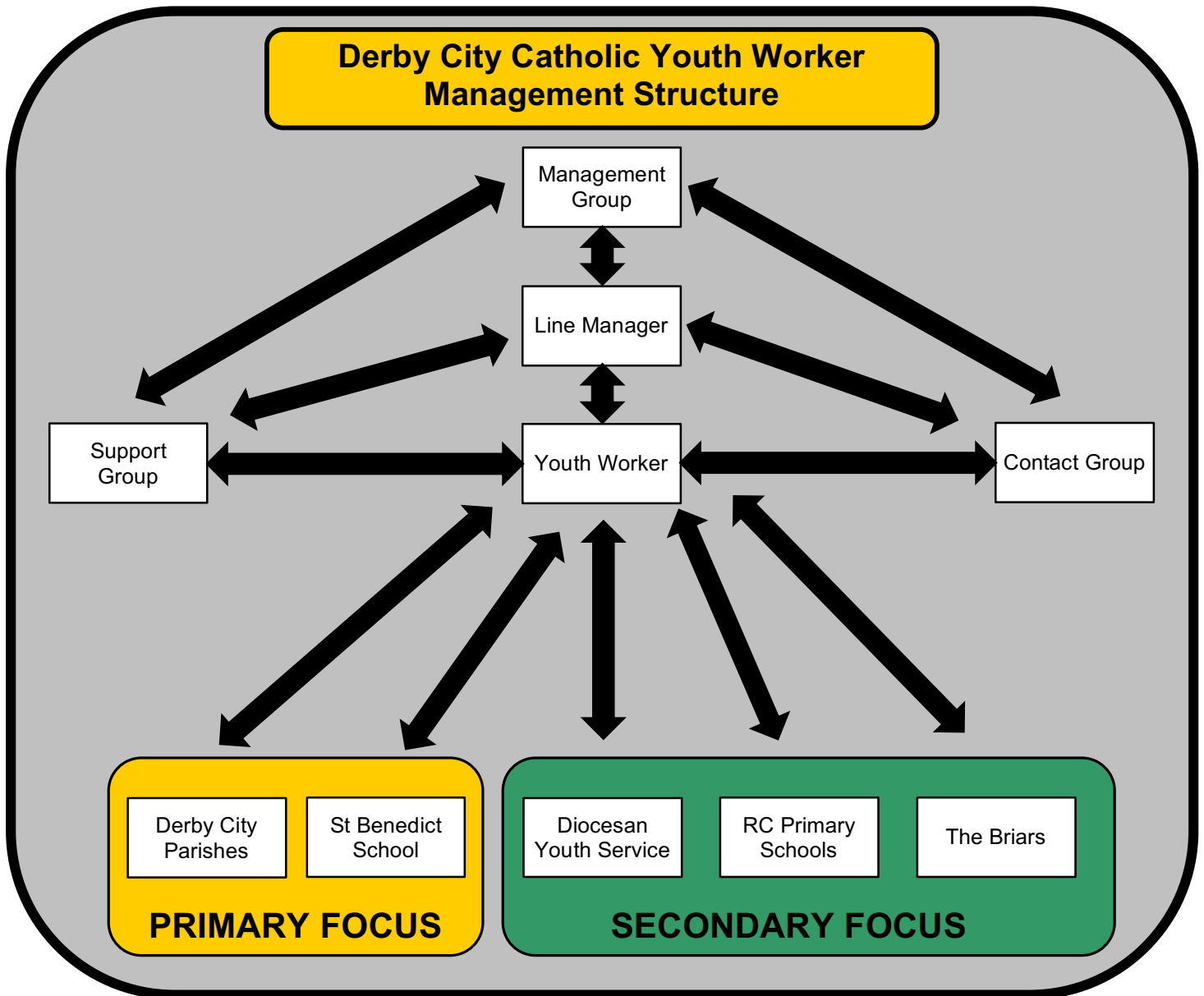
It is not expected that the Youth Worker will be able to tackle all these tasks simultaneously. They are seen as the joint responsibility of the whole Church and are further refined and given definition in the policies which cover each year. The worker and Management Group will review this job description on an annual basis.

Person Specification

Qualifications	Essential	Desirable
A nationally recognised JNC Youth Work Diploma or Degree or a...	*	
Related nationally recognised qualification in teaching, careers guidance, social work	*	
Experience & Skills		
At least 2 years experience of working directly with young people aged 12-19.	*	
Proven track record in the planning & delivery of effective personal & social programmes		*
Experience in working with the Church		*
Proven skills in partnership working	*	*
Excellent verbal and written communication skills		*
Good reflective skills and able to evaluate the progress of a project	*	
Good create skills; the ability to engage young people through a variety of approaches	*	
IT skills		
Abilities & Personal Qualities		
Ability to effectively lead initiatives	*	
Ability to motivate and direct volunteer staff	*	
Ability to work in partnership across parishes	*	
Ability to be a good listener	*	
Ability to work as part of a team	*	
Ability to build relationships	*	
Honest & conscientious	*	
A good sense of humour	*	
Compassionate & sensitive to the needs of others, in particular young people	*	
Ability to engage and empower young people to make decisions for themselves	*	
Ability to take the initiative when appropriate	*	

Ability to manage a complex workload and meet deadlines	*	
Knowledge & Understanding		
A committed and practicing Roman Catholic	*	
Knowledge & understanding of the voluntary & statutory youth work sectors		*
Proven understanding of and commitment to equal opportunities practice	*	

Operating Environment



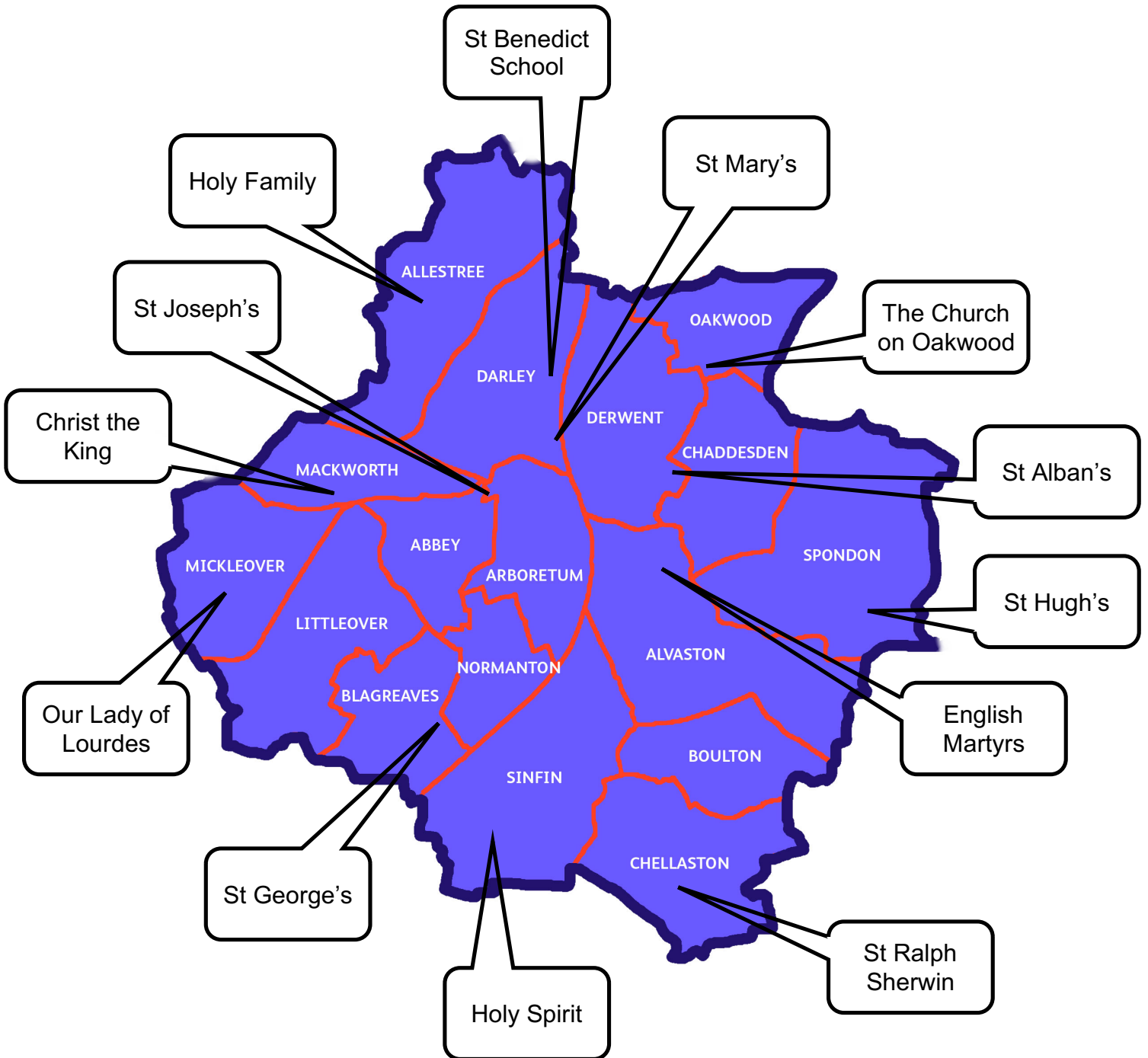
As the scheme covered by many parishes across the city the project team felt it was essential that a stable Management Structure be created and maintained if the project was to succeed. The structure should have several key elements:

- Management Group
To oversee the project and administer the financial requirements
- Support Group
Youth Work Professionals who can advise and assist the appointed person on a group or individual basis

- **Contact Group**
A group of representatives from each of the parishes involved in the scheme, who can facilitate and assist the Youth Worker in their own parishes.
- **Line Manager**
A Line Manager who will offer day-to-day management.
- **Secure Employment**
The incorporation of the scheme into the Diocesan Youth Services will provide the appointed worker with access to professional career development, pension and the administration of salary and expenses.

Derby City Catholic Communities

All the Catholic parishes in the city are involved in this project. The map and details below give some indication of the geographical layout of the city and location of each community.



St Mary's

Fr Geoffrey Hunton (Canon)
 Deacon Chris Blunt
 Deacon Martin Farrell
 St Mary's Rectory
 Bridge Gate
 Derby
 DE1 3AU
 Email: stmaryoffice@talktalkbusiness.net
 Phone: 01332 346 126
 School: St Mary's Primary

The Church of the Holy Family (Served from St Mary's)

Blenheim Drive
 Allestree
 Derby
 DE22 2LG

St George's

Fr Alan Burbidge (Canon)
 Fr Peter Peterken
 40 Village Street
 Old Normanton
 Derby
 DE23 8SZ
 Email: office@stgeorge@aol.com
 Phone: 01332 767 038
 School: St George's Primary

The Holy Spirit (Served from St George's)

Redwood Road
 Sinfin
 Derby
 DE24 9LA

English Martyrs

Fr Mark Brentnall
 Hollis Street
 Alvaston
 Derby
 DE24 8QU
 Email: englishmartyrs@nrcdt.org.uk
 Phone: 01332 574 474
 School: St John Fisher Primary

St Ralph Sherwin (Served from English Martyrs)

Swarkestone Road
 Chellaston
 Derby
 DE73 5UA

Christ the King

Fr John St John
 Prince Charles Avenue
 Mackworth Estate
 Derby
 DE22 4BD
 Email:
 parish@christthekingmackworth.org.uk
 Phone: 01332 340 161

Our Lady of Lourdes

Fr Ka Fai Lee (Canon)
 36 Uttoxeter Road
 Mickleover
 Derby
 DE3 9GE
 Email: ourladyoflourdesrcparish@gmail.com
 Phone: 01332 514 107

St Josphe's

Fr John Trenchard
 Burton Road
 Derby
 DE1 1TJ
 Email: jt@jtrenchard.com
 Phone: 01332 343 777
 School: St Joseph's Primary

St Alban's

Fr David Cain
 Deacon Juan Carlos
 Roe Farm Lane
 Chaddesden
 Derby
 DE21 6ET
 Email: david_cain@me.com
 Phone: 01332 672 914
 School: St Alban's Primary

St Hugh's (Served from St Alban's)

Derby Road
 Borrowash
 Derby
 DE72 3HB

The Church on Oakwood

(Served from St Alban's)
 Bishops Drive
 Oakwood
 Derby
 DE21 2DF

Catholic Schools

Primary Schools

There are 5 Catholic Primary Schools in the city; each year approx 300 of their pupils move on to secondary education. These schools are all closely linked to their founding parishes:

- St Mary's, Broadway, Derby
- St George's, Littleover, Derby
- St Joseph's, Derby
- St John Fisher, Alvaston, Derby (English Martyrs)
- St Alban's, Chaddesden, Derby

Secondary School

- St Benedict Catholic Voluntary Academy

St Benedict Catholic Voluntary Academy is the only Catholic Secondary School in the city.

Vision & Ethos

At Saint Benedict Catholic Voluntary Academy we believe in inspiring our young people to be the best that they can be. We achieve this by building up a faithful and loving community with Christ at its centre. We strive for academic excellence and developing potential while respecting the needs and abilities of all our students. An education at Saint Benedict means quality learning first and foremost with high expectations of every young person. Our highly trained and dedicated team of over 190 teaching and associate staff care passionately about every child achieving. We base our students in House communities which enables them to grow and learn in small families while experiencing a whole range of opportunities that a larger school can offer.

The school is situated on Duffield Road (A6), on the north side of the city. There are currently over 1300 pupils including a 6th Form. There is a wide range of support for students from a full-time lay Chaplain, full-time nurse, Nurture Provision, Gifted and Talented Provision and Enhanced Resource Base. This means that the needs of every child can be catered for. Each student remains within the same House and form throughout their time and tutors stay in the same tutor groups, building strong relationships with the children they care for. In addition to House Leaders, who are senior staff, and Deputy House Leaders, each House has its own full-time member of non-teaching staff who is there for all children. Whether a young person needs additional work, help with organisation or support through a difficult time in their lives, all children benefit from having a caring and dedicated team around them.

Welcome to Derby

Derby is a thriving, harmonious, multi-cultural and multi-faith city. It lies at the junction of the A6, A52 and A38 with junction 25 of the M1 just minutes away. The Inter-City Train Service runs to almost every major city with London around 90 minutes away.

Housing

Whether you want to live in the city or in the nearby countryside, there is a variety of property to buy or rent and although prices have risen, housing costs are lower than most parts of the country.

City Centre

The City Centre has all the usual shops, markets and local facilities and it is small enough to retain a village feel about it. There are lots of good pubs and clubs as well as theatre's, cinemas and restaurants.

Sport and Leisure

There are several leisure centres, many gymns, swimming complexes, football, cricket, cycling, basketball facilities and Pride Park Stadium which is the home of Derby County Football Club.

Derby and its Surroundings

The stunning Peak District National Park is only a short drive away and Markeaton and Darley Parks are two beautiful inner-city parks. The local Catholic parishes are within easy reach of the city centre, accessible by car or by bus. The neighbouring areas of Nottingham, Loughborough & Leicester are all easy to reach and add to the rich and diverse communities that characterise the East Midlands.

Nottingham Diocesan Catholic Youth Service

*I have come that they may have
life and have it to the full.*

John 10:10

Our mission is:

To accompany young people on their journey into a personal relationship with Jesus Christ.

We do this through three main areas:

1. Retreats

Our primary focus is to provide engaging, relevant and age appropriate retreat experiences for the young people of our diocese. With professional Youth Workers and a team of trained Volunteer Peer Mentors, our retreats offer a well-designed balance of high energy activities with more contemplative reflective times, all encouraging young people to focus on their personal, social and spiritual wellbeing.

2. Outreach

We offer support to those working with young people in our parishes. We run young leadership courses equipping young people to be full and active members of their parish, confirmation programmes and diocesan wide gatherings for young people.

3. Formation

From staff inset days, family retreats, women's/men's retreats, we offer days and weekends to those looking to step out of the busyness of everyday life and reconnect with God.

Terms and Conditions

1. The worker will be employed by the NDCYS.
2. He/She will be directly responsible to the Management Group.
3. The worker will be required to complete a probationary period of six months before confirmation of appointment. The terms and conditions provided for with the contract will apply during the probationary period.
4. The salary will be paid by NDCYS, monthly and in arrears. The salary will start in the JNC Salary Range 13 to 15 £23,679 to £25,444 and will be subject to annual review.
5. The worker will work 37.5 hours per week.
6. On completion of a satisfactory probationary period, the worker will be eligible to join the NDCYS pension scheme.
7. Annual holidays will be 20 days per year plus statutory holidays.
8. Copies of the various policies relating to employment, Equal Opportunities, Disciplinary Policy etc. will be available on appointment, before the signing of a contract.
9. Employment will be subject to a clear DBS check.